

Finnrick Analytics
 Finnrick.com
 Austin, TX

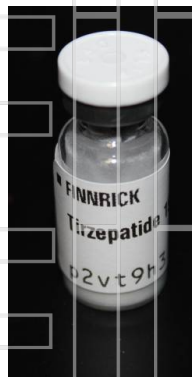


Project 135468
Lab # 130175
Date Rec'd 11/10/2025
Report Issued 11/18/2025

Project
Sample

Tirzepatide 15 mg p2vt9h3

Certificate of Analysis



<u>Analyte</u>	<u>Result</u>	<u>LOQ</u>	<u>Units</u>	<u>Method</u>	<u>Date</u>	<u>% of Label</u>
Peptide Analysis						
Chromatographic purity	>99.95	0.5	%	HPLC-UV/MS	11/12/2025	
Total peptide mass	17.5	0.5	mg	HPLC-UV/MS	11/12/2025	116.9
Tirzepatide	ID Confirmed			HPLC-UV-MS	11/12/2025	

Safer.

The data presented are from the analysis of the sample shown and meet Krause Analytical internal quality assurance criteria unless otherwise flagged. Methods shown reference current Krause Analytical SOPs
 ND - Not detected LOQ - limit of quantification
 Copyright © 2025 Krause Analytical LLC. All rights reserved.

Respectfully submitted,

Mark C. Krause
 Laboratory Director

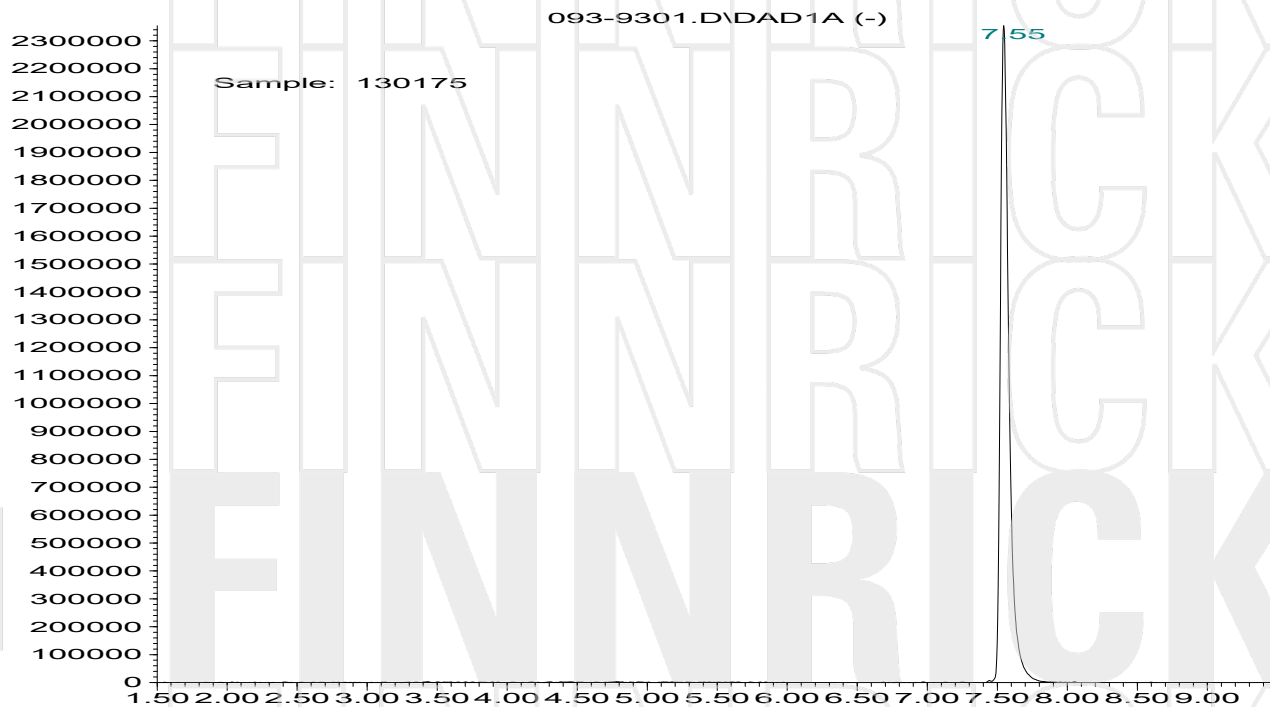
8127 Mesa Drive Suite B-206 Austin, TX 78759



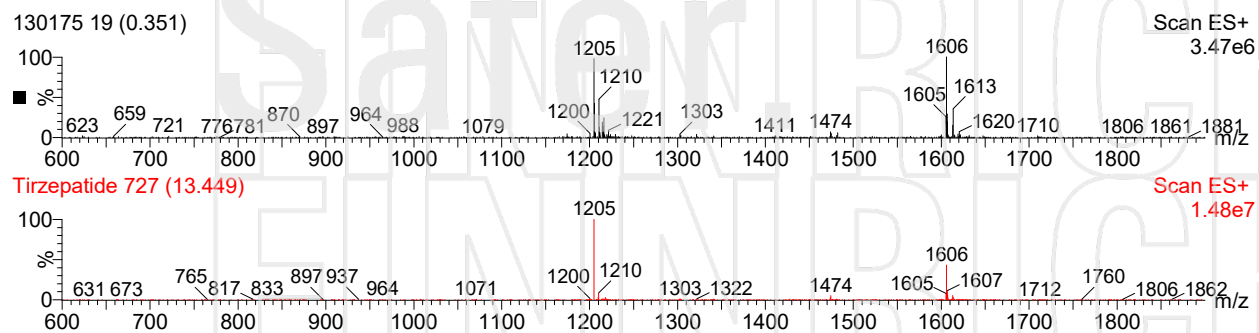
krause analytical

Chromatogram

Response_



Mass spectrum/Reference Spectrum



Krause Analytical, LLC 8127 Mesa Drive Suite B-206 Austin, TX 78759 info@krauseanalytical.com

**krause analytical**

Methods Summary

Purity/Potency/Identification

USP/NF 621

- 2 mL of purified water is added to the lyophilized powder in the vial, and the contents mixed to dissolve the lyophilized powder.
- An aliquot is taken from the vial and diluted to contain approximately 500 mg/L of the peptide.
- The diluted sample is analyzed by HPLC-UV-MS.
- The mass spectrum obtained is compared to an authentic standard of the peptide for identification.
- The total area of all of the peaks in the chromatogram is calculated, and the area of the peak of the peptide is divided by the total area to obtain the chromatographic purity value, reported in percent.
- The area of the peptide is compared to the area of the peptide peak in the known standard to obtain a concentration in the solution. This concentration is used to calculate the total mass of peptide in the vial, which is compared to the stated mass (label claim) and reported as both total mass in the vial and as a percent of the label claim.

Endotoxins

USP/NF 85

- 2 mL of purified water is added to the lyophilized powder in the vial, and the contents mixed to dissolve the lyophilized powder.
- An aliquot is taken from the vial and diluted in endotoxin-free water.
- The diluted sample is analyzed for endotoxins using the LAL method.

Metals

USP/NF 233

- 2 mL of purified water is added to the lyophilized powder in the vial, and the contents mixed to dissolve the lyophilized powder.
- An aliquot is taken from the vial and diluted in deionized water.
- The diluted aliquot is analyzed against known standards by ICP-MS

Krause Analytical, LLC 8127 Mesa Drive Suite B-206 Austin, TX 78759